

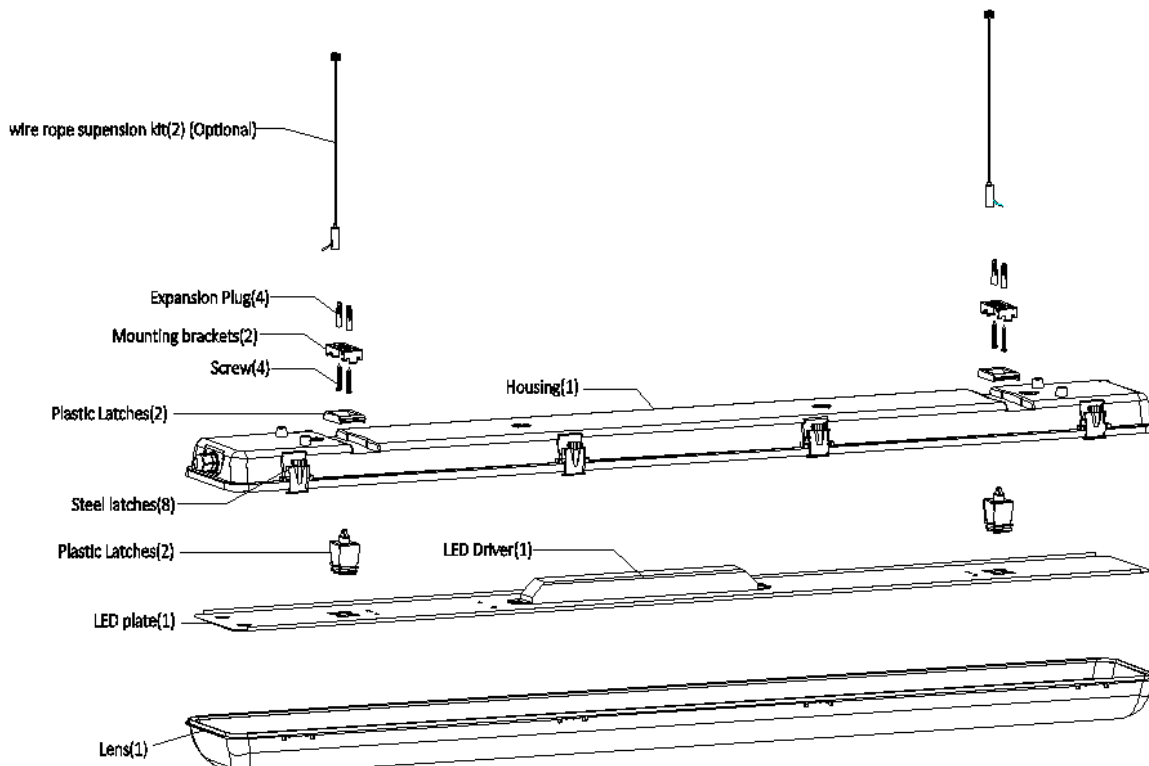
LED Vapor Tight / Linear Fixture Luminaires

(VFO series)

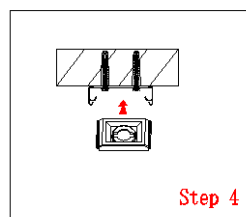
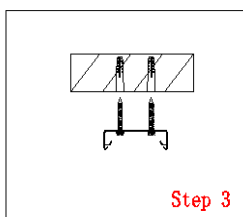
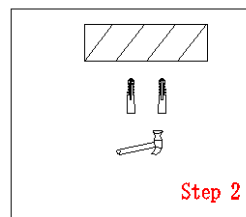
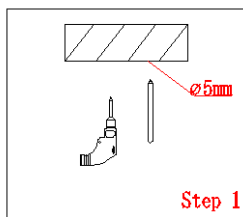
! Warning:

- Turn power off before inspection, installation or removal.
- Properly ground electrical enclosure
- Make sure all install firmly.
- After installation cannot open the luminaires for cleaning and maintain.
- Use only UL approved wire for input/output connections. Minimum size 18 AWG

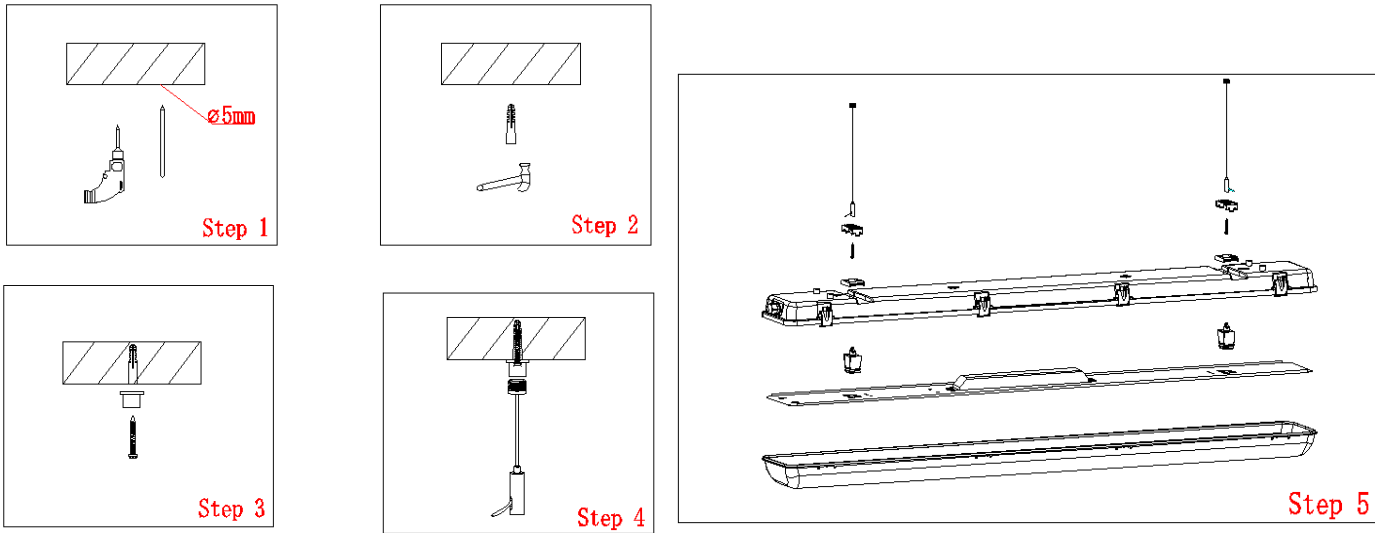
Components Included:



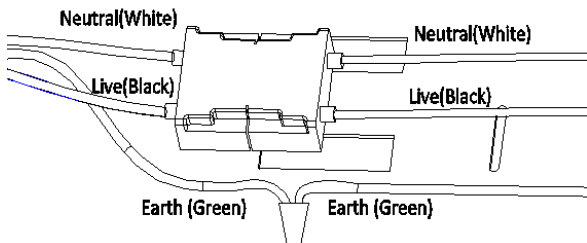
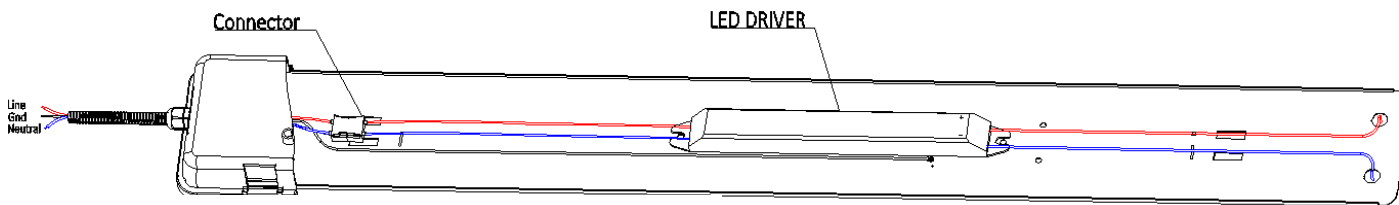
Installation A: Surface Mounting Option



Installation B: Suspended Mounting Option



Wiring:



Continuous installation (Connect 10 units max):

