

LED Canopy Light

INSTALLATION INSTRUCTIONS

PLEASE READ CAREFULLY AND SAVE THESE INSTRUCTIONS, AS YOU MAY NEED THEM AT A LATER DATE.

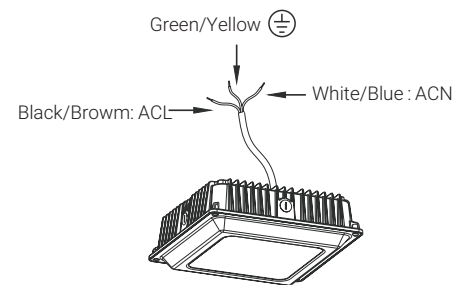
Warning:

1. Can not use the electric generator to test the LED lamp
2. Please abide by related country, regional and local law and regulations when install this fixture.
3. Please turn off the power before installation or maintenance.
4. Proper earth grounding is required to ensure safety.

Notice:

1. To avoid possibility of electrical shock or fire, the installation personnel must have professional electric knowledge.
2. Please wear gloves to avoid injury before installation.
3. If any smoke or spark of the wire happened, please turn off the power immediately and notify relevant personnel.

Wiring Diagram



Installation Method I :

1. Take off the plate of the led fixture(Figure 3).

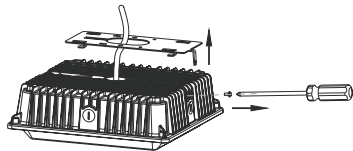


Figure 3

3. Drill the rubber plug into the ceiling, then fix the plate to the ceiling. (Figure 5).

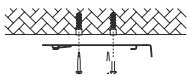


Figure 5

2. Drill the holes on the ceiling accordingly to fit the plate (Figure 4).

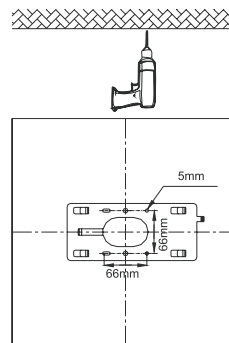


Figure 4

4. Hang the fixture by the plate (figure6), then connect to local power supply with necessary wiring protection .

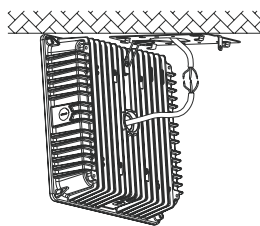


Figure 6

5. Install the fixture by the plate, then fasten the screws on both sides of the fixture (Figure 7) .



Figure 7

Installation Method II:

1. Connect the wiring to the local power supply in the 3/4"NPT Stem (Figure 1).

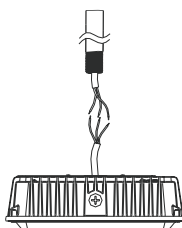


Figure 1

2. Screw the fixture to the 3/4"NPT Stem(Figure 2).

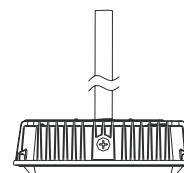


Figure 2